

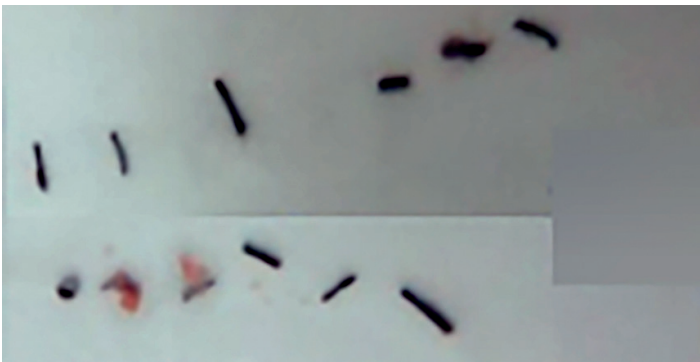
## FACTS

# PENETRATION OF THE HIDE BY FOREIGN OBJECTS



## FOREIGN OBJECTS

When cattle rub against an object, such as a piece of old metal equipment, small fragments like those pictured above can break off and penetrate their hides. This is a food safety issue, since these foreign objects then end up in meat that could be purchased by a consumer further down the supply chain. Discovery of these fragments can lead to recalls or refusal of carcasses or portions of carcasses at processing plants. Preventing the entry of foreign objects into carcasses via the hide starts on-farm.



## SOURCES OF FOREIGN OBJECTS

Common sources of foreign objects that can penetrate the hide are:

- Metal or hard plastic rollers for cattle to scratch
- Scrap metal or old equipment Buckshot or other shrapnel
- Derelict buildings
- Poorly maintained handling equipment

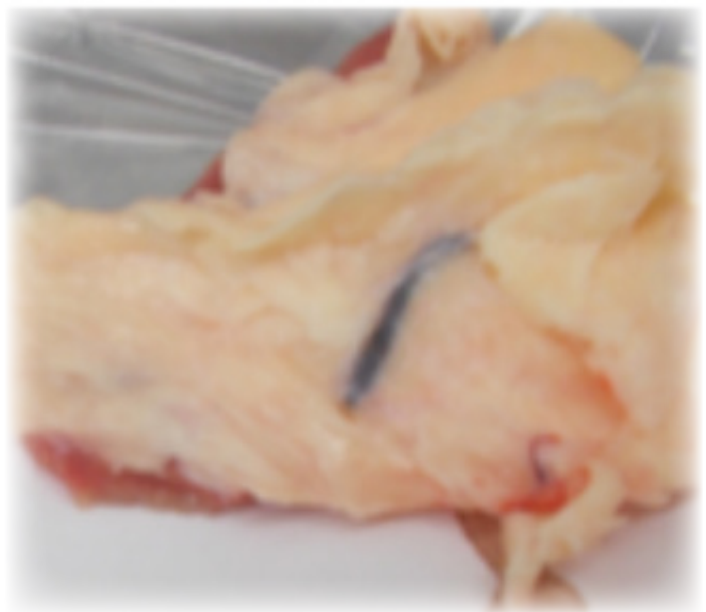


## PREVENTATIVE MEASURES

Producers can help minimize the risk of foreign objects penetrating cattle hides by implementing targeted strategies. The most effective practices will be those that prevent access of cattle to sources of foreign objects before exposure occurs. This includes:

- Removing scrap metal or old equipment from pastures or pens
- Regularly maintaining facilities and equipment to prevent fragments breaking off
- Restricting access to derelict buildings, metal rollers, or bird hunting areas

In addition, producers should regularly inspect cattle and facilities to monitor incidence and potential new hazards.



FOR MORE INFORMATION PLEASE VISIT US AT

[verifiedbeef.ca](http://verifiedbeef.ca)